



Integrating Workflow with J2EE Applications

Best Practices from the Field

Charles Ames
CEO, Oak Grove Systems

chuck@oakgrovesystems.com

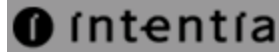
Overview

- Agenda
 - Assumptions – “World View”
 - Scenarios – Situations
 - Problems – What are the key issues?
 - Solutions – How have those been addressed?
- Format
 - Introduction
 - Mini-Panel

Sample Space



Full Degree°



OCTANEWAVE

digitalfairway

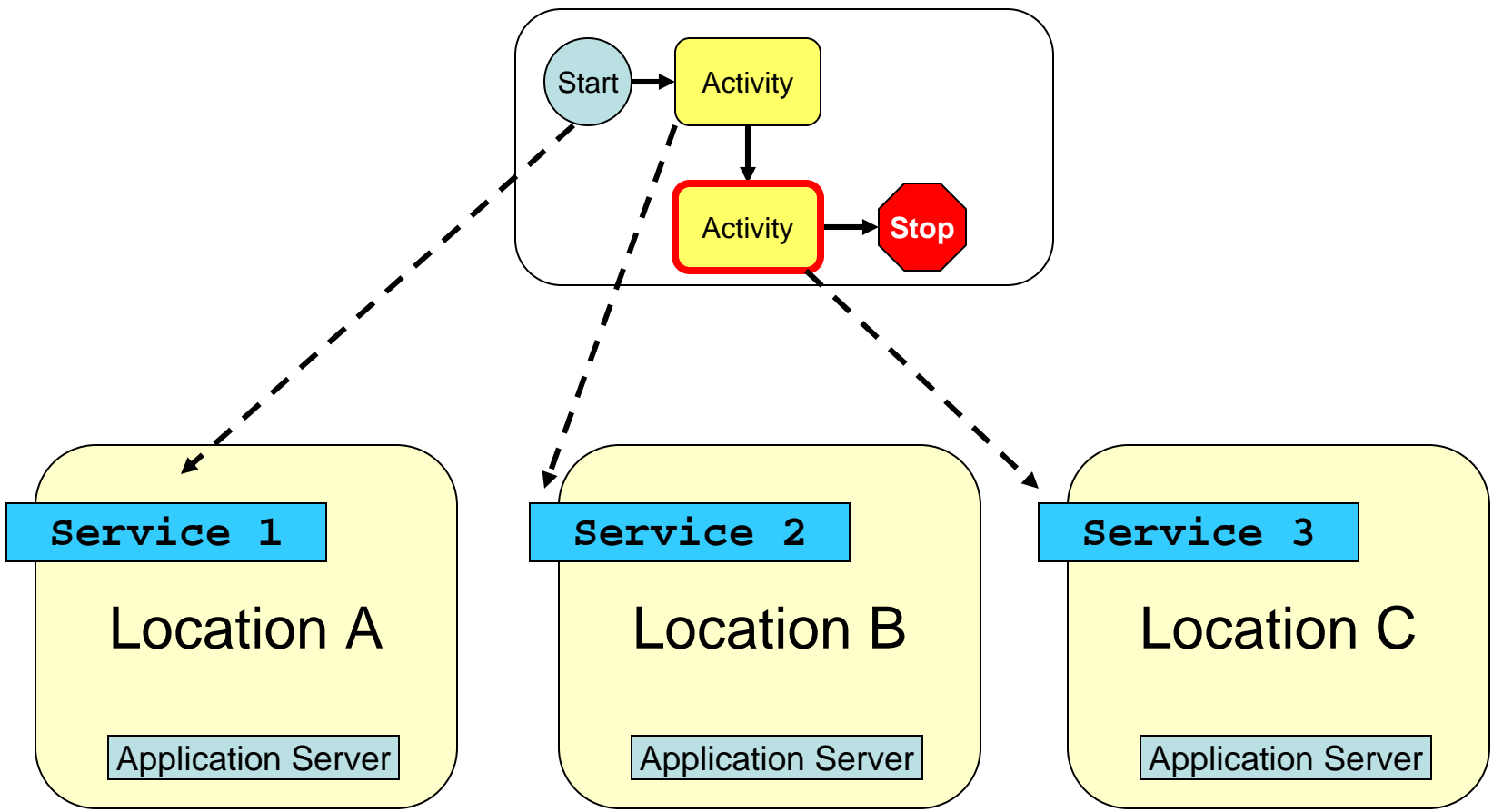


Assumptions

“Programming the Enterprise”

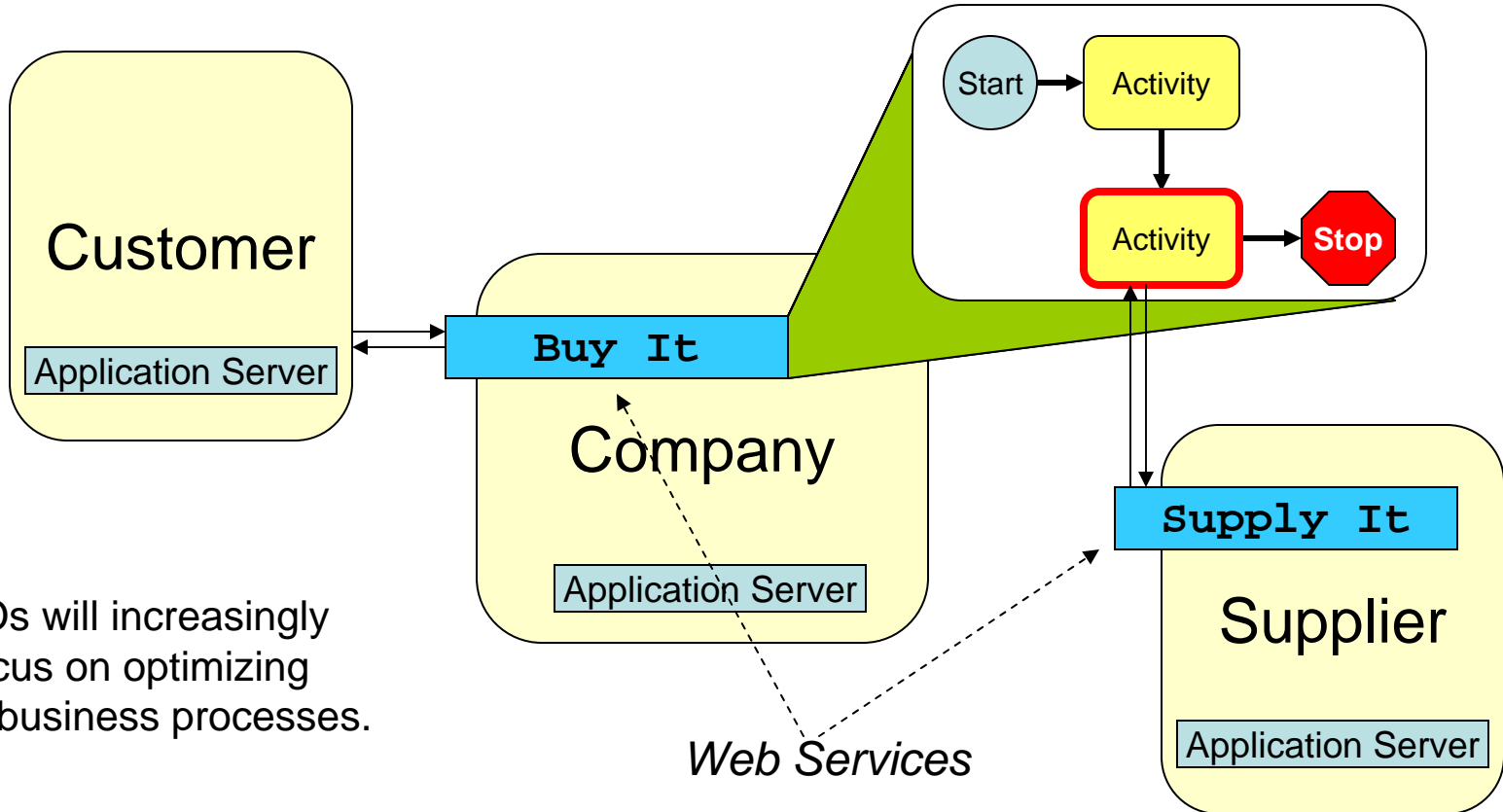
- Objective: Hyper-efficiency
- Mission: Eliminate “friction” resulting from intellectual decay.
- Strategy: Automate “management”.
- Tactics: Web Services + Workflow = Enterprise Orchestration

Scenario: Web Services Orchestration



Scenario: Processes As Web Services

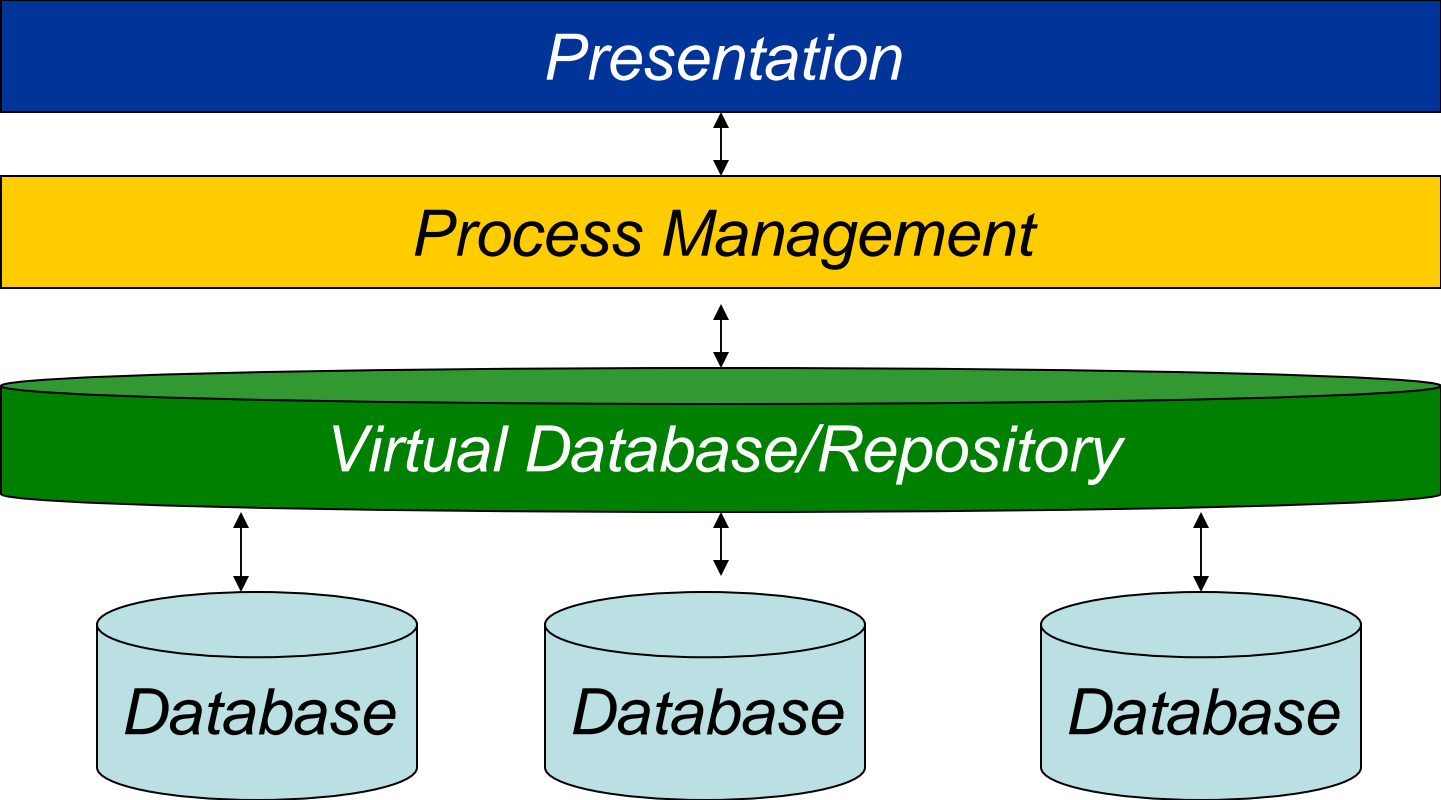
Business Process Management “layer” orchestrates complex business services.



CIOs will increasingly focus on optimizing core business processes.

Web Services

Scenario: Virtual Data Platform



Scenario: Composite Applications

Multiple Sources

Multiple Transports



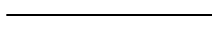
Databases



JMS



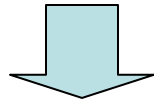
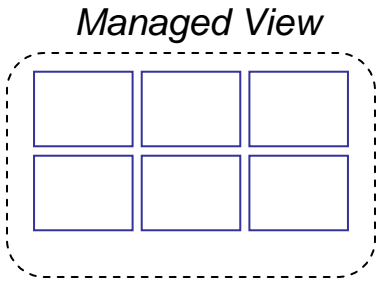
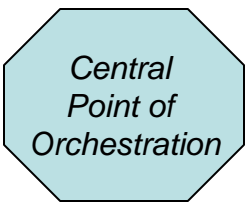
Applications



HTTP



Web Services



Personalized Applications

Key Issues

- Common User/Permission Management
- Locating intersection of process, application, & data
- Architecture supports recombination at the logic level (approach to modularity).
- Recognize “true” process
 - (example: override)
- Modular processes (“Flowlets”)

Solutions

- Use external, multi-source resolver for user management; encapsulate permissions with each app module.
- Application context.
- Exposed services should be self contained.
- View “workflow” as a logic abstraction layer.

Panel

- David Noble
 - Chief Architect, Reactor 5, Oak Grove Systems
- Winston Damarillo
 - CEO, Gluecode Software
- Charles Ames
 - CEO, Oak Grove Systems